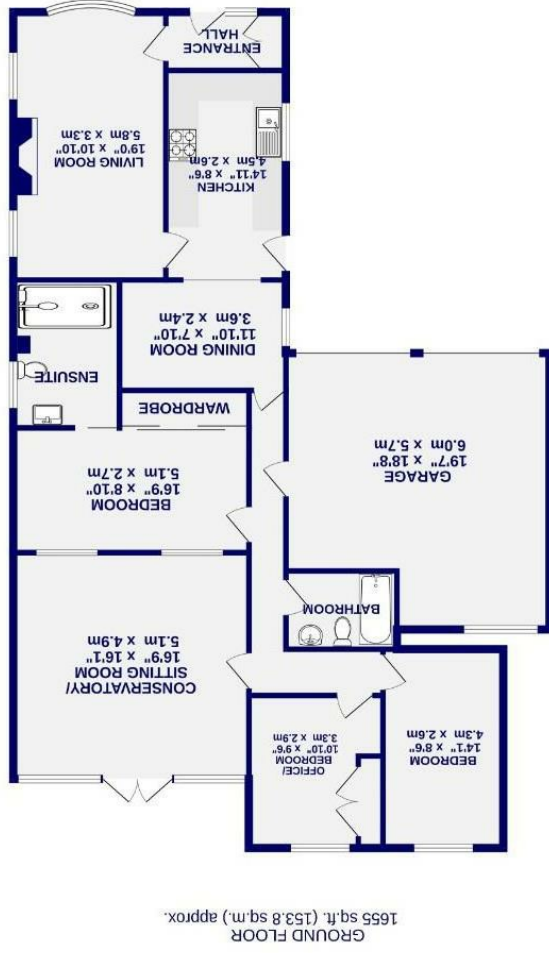


These particulars have been prepared as accurately and as reliably as possible, but should not be relied upon as 'statement of fact'. If there is any point which is of particular importance to you, please contact the office and we would be pleased to check the information. We have not tested any services, appliances, equipment or facilities and nothing in these particulars should be deemed to be a statement that they are in good working order, or that the property is in good structural condition or otherwise. Any areas, measurements, floor plans or distances referred to are given as a guide only and are not precise. Purchasers must satisfy themselves by inspection or by otherwise regarding the items mentioned above and as to the correctness of each of the statements contained in these particulars. No person in the employment of Ashtons has any authority to make or give any representation or warranty whatsoever in relation to this property or these particulars nor enter into any contract relating to the property on behalf of the vendor. Please note that some images may have been edited with the use of AI. We are legally required to carry out AML checks for all purchasers, sellers and giftors, which become mandatory once an offer has been accepted. There is a non-refundable fee of £30 + VAT per purchaser and per giftor for these checks.

# Southfield Close Rufforth, York YO23 3RE

Freehold  
Council Tax Band - D

- Substantial Detached Bungalow
- Three Bedrooms
- Two Bathrooms
- Stunning Gardens To Front & Rear
- Private Setting
- Driveway & Double Garage
- No Onward Chain
- EPC D



Southfield Close  
Rufforth, York  
YO23 3RE

£495,000



Located within the sought-after village of Rufforth, positioned to the west of York, is this substantial and deceptively spacious detached bungalow occupying a peaceful cul-de-sac setting on the edge of the village. Surrounded by attractive countryside whilst still offering excellent access into York city centre, Rufforth continues to be a popular choice for a range of buyers thanks to its strong community feel, local amenities and convenient transport connections.

Set on a generous plot, the property offers ample off-street parking leading to a double garage, alongside a larger than average and beautifully established rear garden enjoying open aspects beyond, creating a wonderful sense of privacy and space.

Internally, the accommodation is both versatile and well proportioned throughout. The property benefits from three generous double bedrooms, including an impressive principal suite featuring a walk-in wardrobe and a modern en-suite shower room with a large walk-in shower area.

To the rear of the home, the property has been extended to create a substantial conservatory/garden room which overlooks the garden and provides an additional reception space ideal for relaxing or entertaining throughout the year.

Offering spacious accommodation in a quiet village setting with fantastic outdoor space, this much-loved home is sure to appeal to a variety of buyers. Properties in locations such as this rarely remain on the market for long, therefore early viewing is highly recommended.

